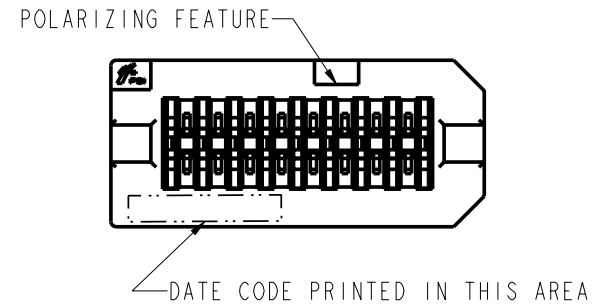
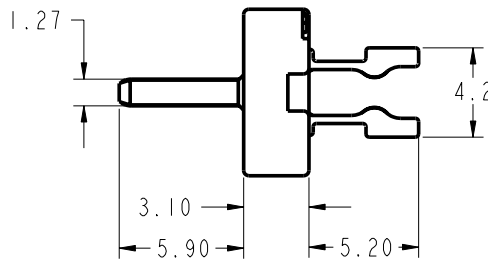
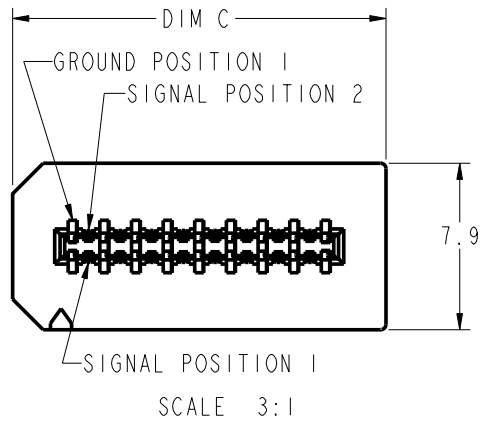
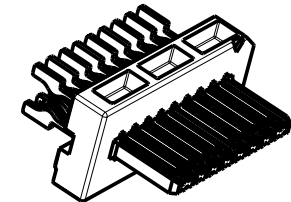
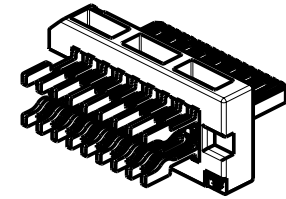
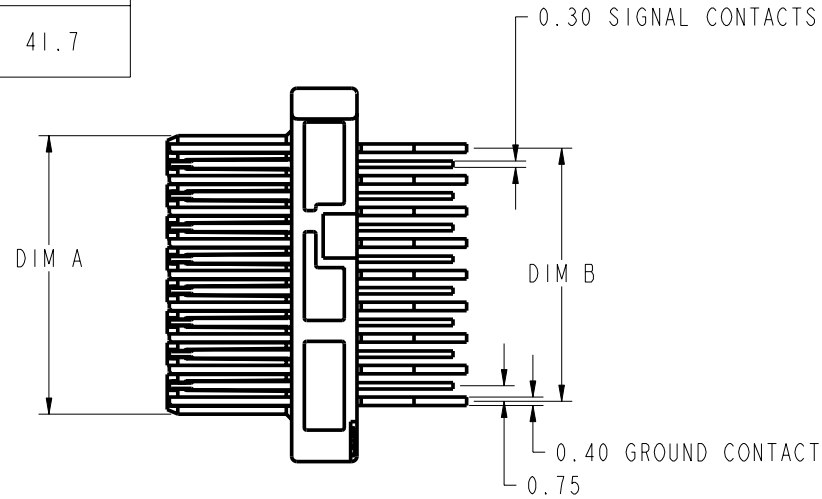


PRODUCT NUMBER	DIM A	DIM B	DIM C
58443-001 58443-001LF	13.2	12.0	17.7
58443-004 58443-004LF	37.2	36.0	41.7



Copyright FCI.

rev	ecn no	dr	date
B	03-1046	GIP	2003-09-18
C	03-1119	DAI	2003-11-20
D	04-0016	DAI	2004-02-09
E	04-0484	DAI	2004-06-08
F	05-0064	TAB	2005-03-03
G	05-0528	DAI	2005-06-30
H	106-0123	HVN	2006/07/26

www.fciconnect.com		surface 3.2 ASME Y14.5	tolerance std ASME Y14.5	projection MM
Dr G.PETERS 2003/04/01		TOLERANCES UNLESS OTHERWISE SPECIFIED		size A4
Eng D.BRANN 2003/04/01	Chr HIRAN V N 2006/07/26	ANGULAR	0.X ±.30	Scale 2:1
Appr HIRAN V N 2006/07/26		LINEAR	0.XX ±.10	ECN 106-0123
		0° ±2°	0.XXX ±.050	Spec ref
Product family EyeMax (TM)				
FCI		EYEMAX PLUG ASSEMBLY		Rev. H
catalog no		dwg no 58443		sheet 1 of 4
		CUSTOMER		

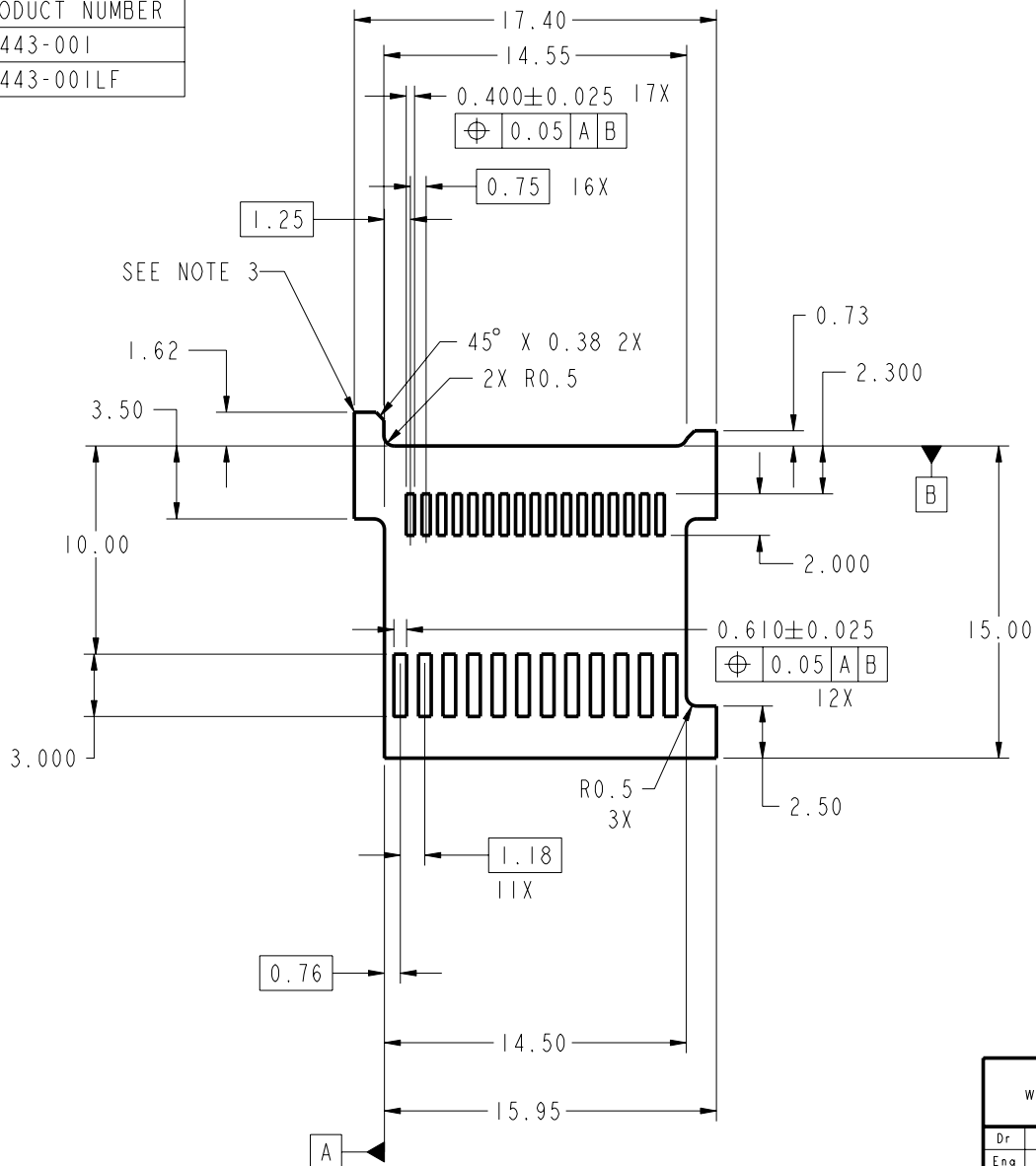
REV F - 2006-04-17

PDM: Rev:H

STATUS:Released

Printed: Jan 28, 2008

PRODUCT NUMBER
58443-001
58443-001LF



PCB NOTES:

1. PADS ON BOTH SIDES OF PCB.
2. DIMENSIONS APPLY TO BOTH SIDES OF THE PCB LOCATED FROM DATUMS A & B.
- ③ EXTENSIONS SHOULD NOT BE USED TO LOCATE SOLDER TAILS TO SOLDER PADS ONLY AS AID IN ASSEMBLY BY LIMITING TOP TO BOTTOM MOVEMENT OF THE PCB.
4. PCB THICKNESS: 1.57mm (.062").

RECOMMENDED 4X PCB LAYOUT  
SCALE 3:1

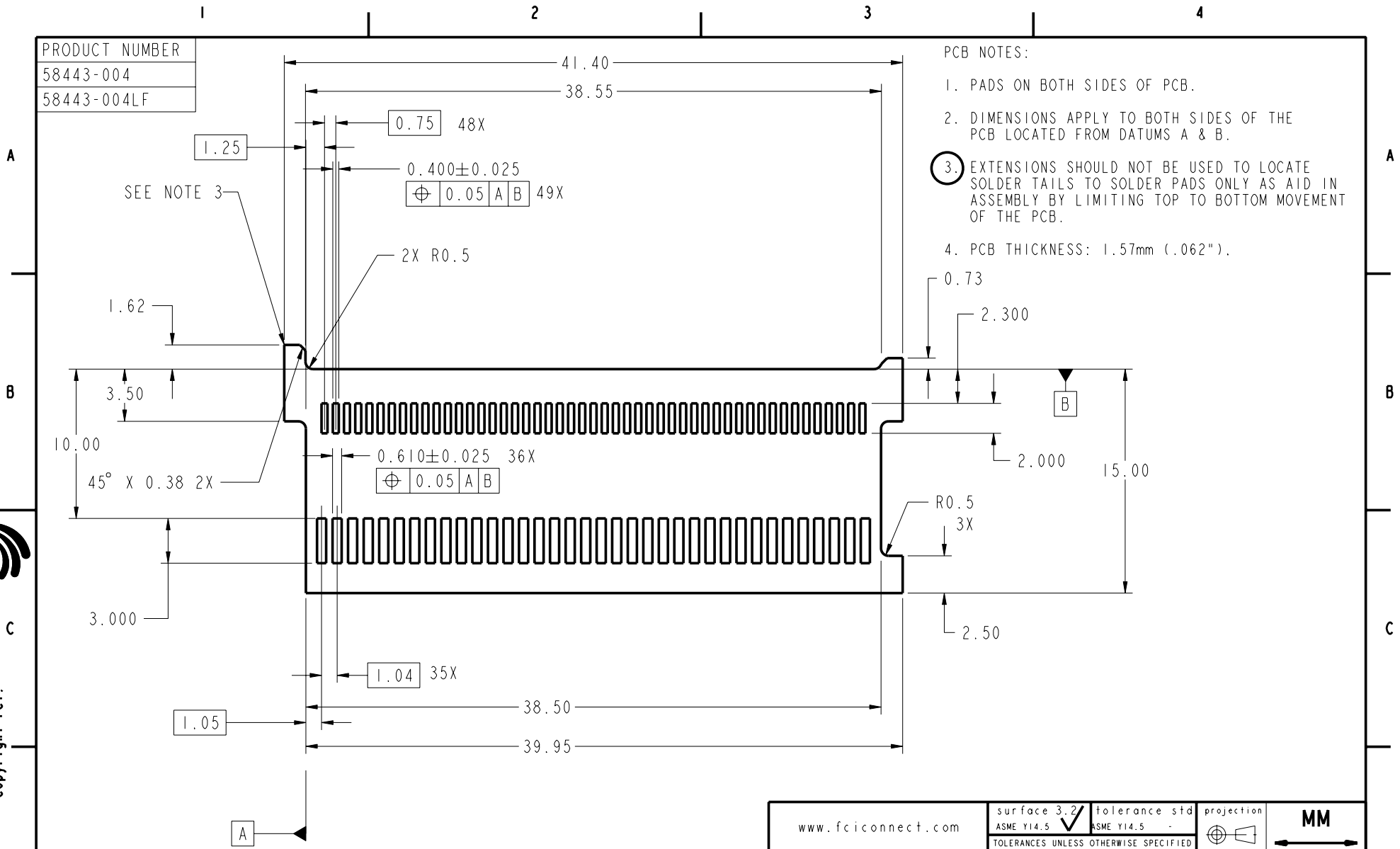
www.fciconnect.com		surface 3.2 ASME Y14.5 ✓	tolerance std ASME Y14.5 -	projection MM	size A4 Scale 2:1
		TOLERANCES UNLESS OTHERWISE SPECIFIED		size A4	
Dr	G.PETERS	2003/04/01	ANGULAR	0.X ±.30	ECN 106-0123
Eng	D.BRANN	2003/04/01	LINEAR	0.XX ±.10	
Chr	HIRAN V N	2006/07/26	0° ±2°	0.XXX ±.050	Spec ref
Appr	HIRAN V N	2006/07/26	Product family EyeMax (TM)		
FCI		title EYEMAX PLUG ASSEMBLY		dwg no 58443	
		catalog no		CUSTOMER sheet 2 of 4	

REV F - 2006-04-17

PRODUCT NUMBER
58443-004
58443-004LF

PCB NOTES:

1. PADS ON BOTH SIDES OF PCB.
2. DIMENSIONS APPLY TO BOTH SIDES OF THE PCB LOCATED FROM DATUMS A & B.
3. EXTENSIONS SHOULD NOT BE USED TO LOCATE SOLDER TAILS TO SOLDER PADS ONLY AS AID IN ASSEMBLY BY LIMITING TOP TO BOTTOM MOVEMENT OF THE PCB.
4. PCB THICKNESS: 1.57mm (.062").



RECOMMENDED 12X PCB LAYOUT

SCALE 3:1

www.fciconnect.com		surface 3.2 ASME Y14.5	tolerance std ASME Y14.5	projection MM	size A4 Scale 2:1
		TOLERANCES UNLESS OTHERWISE SPECIFIED			
Dr	G.PETERS	2003/04/01	ANGULAR	0.X ±.30	ECN 106-0123 Spec ref
Eng	D.BRANN	2003/04/01	LINEAR	0.XX ±.10	
Chr	HIRAN V N	2006/07/26	0° ±2°	0.XXX ±.050	
Appr	HIRAN V N	2006/07/26	Product family EyeMax (TM)		
Title EYEMAX PLUG ASSEMBLY		dwg no 58443		Rev. H	
catalog no		CUSTOMER		sheet 3 of 4	

REV F - 2006-04-17

CONNECTOR NOTES:

1. MATERIAL: HOUSING, HIGH TEMPERATURE THERMOPLASTIC, UL 94V-0 RATED, SUITABLE FOR REFLOW SOLDERING. CONTACTS: COPPER ALLOY.
2. PLATING: GOLD OVER NICKEL IN CONTACT AREA AND TIN-LEAD ON SOLDER TAILS UNLESS PART NUMBER ENDS IN LF LEAD FREE SOLDER TAIL PLATING 2um (80u") MIN MATTE TIN OVER 1.27um (50u") MIN NICKEL UNDERPLATE
3. PRODUCT SPECIFICATION GS-12-209.
4. PACKAGING SPECIFICATION GS-14-794. PACKAGING OF LEAD FREE PRODUCTS MEETS LABELING AND PACKAGING SPECIFICATION GS-14-920.
5. APPLICATION SPECIFICATION GS-20-026 FOR PADDLE CARD AND CABLE TERMINATION DETAIL.
6. MATES WITH LATCH-STYLE RECEPTACLE 58366, 58367 (12X) OR 58368, 58369 (4X), OR THUMBSCREW STYLE 10009626 (12X) OR 10009629 (4X).
7. PLUG ALSO AVAILABLE WITH PCB ATTACHED. WITH UNEQUALIZED PCB 58638 OR EQUALIZED 4X 10026692 OR 12X 10026694.
8. PLUG CAN BE PURCHASED AS PART OF A KIT THAT INCLUDES THE BACKSHELLS AND CABLE COLLARS. FOR 4X, 58441 FOR LATCH-STYLE PLUG KITS OR 10013923 FOR THUMBSCREW PLUG KITS. FOR 12X, 58442 FOR LATCH-STYLE PLUG KITS OR 10014004 FOR THUMBSCREW PLUG KITS.
9. IF LEAD FREE PART NUMBER, THE HOUSING WILL WITHSTAND EXPOSURE TO 260°C PEAK TEMPERATURE FOR 10 SECONDS IN A WAVE SOLDER APPLICATION WITH A 1.60mm MIN THICK CIRCUIT BOARD.
10. LEAD FREE PRODUCTS MEET EUROPEAN UNION DIRECTIVES AND OTHER COUNTRY REGULATIONS AS DESCRIBED IN GS-22-008.



Copyright FCI.

www.fciconnect.com			surface 3.2 ASME Y14.5 ✓	tolerance std ASME Y14.5 -	projection 	MM 
			TOLERANCES UNLESS OTHERWISE SPECIFIED			
Dr	G.PETERS	2003/04/01	ANGULAR	LINEAR	0.X ±.30	size A4 Scale 2:1
Eng	D.BRANN	2003/04/01			0.XX ±.10	
Chr	HIRAN V N	2006/07/26	0° ±2°		0.XXX ±.050	ECN 106-0123
Appr	HIRAN V N	2006/07/26	Product family EyeMax (TM)			Spec ref
		Title EYEMAX PLUG ASSEMBLY			dwg no 58443	Rev. H
		catalog no -			CUSTOMER	sheet 4 of 4